

Controls for Factory Automation



Panel Components

Rev. 2 06.07.16

..

H.H. Barnum Company 800.695.3055

For Application Assistance

..

H.H. Barnum Company
Technical Support 800.695.3055

ISO: 9001:2008

BALLUFF

sensors worldwide



more sensors, more solutions



www.hhbarnum.com



Panel Components

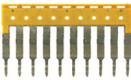


H.H. Barnum Company
800.695.3055

Picture Part Number/Description Notes



1706010000
Weidmuller, Modular Feed-through Terminal, 3 tension clamp connections, for TS35 DIN rail, dark beige, 600V, 23 Amp, 26-12 AWG (0.14-4 mm²) range



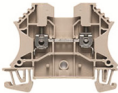
1608940000
Weidmüller, ZQV 2.5/10, 10 Pole jumper, Yellow



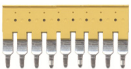
1706110000
Weidmüller, End Plate, ZAP/TW7, 2.5mm wide x 50.5mm long x 36.2mm high, dark beige



1706090000
Weidmuller, ZPE 2.5-2/3AN Ground Terminal, single level, green/yellow



1020000000
Weidmuller, WDU 2.5 Feed through Terminal, single level, Clamping Screw, 600V/25A/#22-12AWG, Beige, Use Endplate#105000,



1693880000
Weidmuller, ZQV 2.5N/10, Jumper, Plug in, 10 Yellow pins, 25 Amp Max.

Terminals

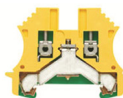


Panel Components

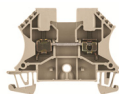


H.H. Barnum Company
800.695.3055

Picture	Part Number/Description	Notes
---------	-------------------------	-------



101000000
Weidmuller, WPE 2.5 Ground Terminal, single level, Clamping Screw, #22 -12AWG, Green/yellow, TS35, Rail Gnd., Use endplate#105000



102010000
Weidmuller, WDU 4 Feed through Terminal, single level, Clamping Screw, 600V/35A/#22-10AWG, Beige, Use Endplate#105000,



175826000
Weidmuller, ZQV 4N/10, 10-pole cross-connection pluggable jumper (yellow in color)



101010000
Weidmuller, WPE 4 Ground Terminal, single level, Clamping Screw, #22 -10AWG, Green/yellow, TS35, Rail Gnd., No endplate needed



105000000
Weidmuller, WAP 2.5-10 End Plate, Beige, Use with Terminals WDU2.5 -- WDU 10



051450000
Weidmuller, TS 35X7.5/LL,2M, steel, 1mm thick, 2meters long, galvanized / yellow passiveness, short-circuit strength

Terminals



Panel Components



H.H. Barnum Company
800.695.3055

Picture

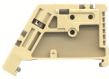
Part Number/Description

Notes



1061200000

Weidmuller, WEW 35/2, End Brackets for
TS 35mm Rail, Block will accept tags
and Bus bar support



0383560000

Weidmuller, EW 35 end anchor, Beige,
for TS35 Din Rail

Terminals



Panel Components



H.H. Barnum Company
800.695.3055

Picture	Part Number/Description	Notes
---------	-------------------------	-------

Accessories



9008330000

Weidmuller Uninsulated Screwdriver,
Blade width (B): 3.5mm, Blade length:
100 mm, Blade thickness (A): 0.6mm



9014350000

Weidmuller, PZ 6 ROTO, Crimping tool,
Crimping tool for wire-end ferrules, 0.14
mm², 6 mm², (26awg-10awg)
Trapezoidal crimp



9002650000

Weidmuller, KT8 cutter, for stranded and
solid conductors up to 10AWG



9005000000

Weidmuller, STRIPAX, 10-28 awg, strips
and cuts wires



9205560000

Weidmuller, Slottedscrewdriver set, 6
screwdrivers in total with blade widths
ranging from 2.0mm to 5.5mm



Panel Components



H.H. Barnum Company

800.695.3055

Picture Part Number/Description Notes



1966020000

Weidmuller, Fuse Terminal Blocks, WSI 25/1 10 x 38 Midget , 600 V, 30 A max., Single pole, no LED, 18-4 AWG, 17.8 x 58 x 81mm, TS35 DIN rail mount, UL/CSA 508A, 200kA SCCR Rated



1966050000

Weidmuller, Fuse Terminal Blocks, WSI 25/1 Class CC with rejection, 600 V, 30 A max., single pole, no LED, 18-4 AWG, 17.8 x 58 x 81mm. TS35 DIN rail mount, UL/CSA 508A, 200kA SCCR Rated



1966040000

Weidmuller, Fuse Terminal Blocks, WSI 25/2 Class CC with rejection, 600 V, 30 A max., double pole, no LED, 18-4 AWG, 17.8 x 58 x 81mm, TS35 DIN rail mount, UL/CSA 508A, 200kA SCCR Rated



1966030000

Weidmuller, Fuse Terminal Blocks, WSI 25/3 Class CC with rejection, 600 V, 30 A max., triple pole, no LED, 18-4 AWG, 17.8 x 58 x 81mm. TS35 DIN rail mount, UL/CSA 508A, 200kA SCCR Rated



1886580000

Weidmuller, WSI 4 Fuse terminal 5X20mm without LED



1886590000

Weidmuller W-Series, Fuse terminal, Rated cross-section: 4 mm², Screw connection, LED, 5x20mm fuse, 10 -36VAC/DC

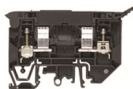


Panel Components



H.H. Barnum Company
800.695.3055

Picture Part Number/Description Notes



1880430000

Weidmuller, Fuse Terminal, 1-1/4" x 1/4", without blown fuse indication, 300V, 500V max voltage, UL/CSA, 30-10 AWG (0.05-4mm²) range, 33KA breaking capacity.



1122770000

Weidmuller, TERMSERIES, Relays, No. of contacts: 1, CO contact, AgNi, Rated control voltage: 24 V DC \pm 20 %, Continuous current: 6 A, Screw connection



1122830000

Weidmuller, TERMSERIES, Relays, No. of contacts: 1, CO contact, AgNi, Rated control voltage: 120 V AC \pm 10 %, Continuous current: 6 A, Screw connection



1123490000

Weidmuller TRS Relay 24 VDC 2 CO



1123550000

Weidmuller, TRS RC 2CO, TERMSERIES, Relays, No. of contacts: 2, CO contact, AgNi, Rated control voltage: 120 V AC \pm 10 %, Continuous current: 8 A, Screw connection



8881610000

Weidmuller, RCI Kit, 24vdc, DPDT 2 change over contacts, screw connection, test button, LED, 8 Amps

Panel Components



Panel Components



H.H. Barnum Company
800.695.3055

Picture Part Number/Description Notes



8897080000

Weidmuller rci kit 115vac, 2co ld/pb, screw connection, 2 co contacts with test button



9915480000

Weidmuller, RS SIMPLEX, 125V, Integrated DIN Rail Mount Single Outlet, 15 AMP, 35mm(L) x 70mm(w) x 58.5mm(D), without circuit breaker



6720005421

Weidmuller, 15A, 120 VAC Dual Outlet, Din Rail Mount, DRAC DP 15



6720005422

Weidmuller, 15A, 120VAC GFI OUTLET



1879480000

Weidmuller, Power Distribution Blocks, WPDB 70 1-4 AL, Range 1 input Pole #14 AWG to 2/0 (2.5 -70 mmSq) - 4 Output Poles #14 AWG to 2 (2.5 -35 mmSq), Aluminum Wire 90 Deg. C, 175 Amps @ 600V, UL/CSA



1879420000

Weidmuller, Power Distribution Blocks, WPDB 185/35 1-8 AL, Range 1 input pole - 8 output pole #6 AWG to 400 kCMil (16 -185 mmSq), Aluminum Wire 90 Deg C, 310 Amps @ 600V, UL/CSA



Panel Components



H.H. Barnum Company
800.695.3055

Picture	Part Number/Description	Notes
---------	-------------------------	-------

**BR1D05AC**

Weidmuller Branch Circuit Breaker,
UL489, 1 Pole, Trip Curve D, 120VAC,
0.5amp

**BR1D1AC**

Weidmuller Branch Circuit Breaker,
UL489, 1 Pole, Trip Curve D, 120VAC,
1amp

**BR1D2AC**

Weidmuller Branch Circuit Breaker,
UL489, 1 Pole, Trip Curve D, 120VAC,
2amp

**BR1D3AC**

Weidmuller Branch Circuit Breaker,
UL489, 1 Pole, Trip Curve D, 120VAC,
3amp

**BR1D5AC**

Weidmuller Branch Circuit Breaker,
UL489, 1 Pole, Trip Curve D, 120VAC,
5amp

**BR1D10AC**

Weidmuller Branch Circuit Breaker,
UL489, 1 Pole, Trip Curve D, 120VAC,
10amp

Circuit Breakers



Panel Components



H.H. Barnum Company
800.695.3055

Picture

Part Number/Description

Notes



SU1D05AC

Suppl / 1P Cct Brkr / D Curve / 0.5A



SU1D1AC

Suppl / 1P Cct Brkr / D Curve / 1A



SU1D2AC

Suppl / 1P Cct Brkr / D Curve / 2A



SU1D3AC

Weidmuller Suppl / 1P Cct Brkr / D Curve / 3A



SU1D5AC

Suppl / 1P Cct Brkr / D Curve / 5A



SU1D10AC

Suppl / 1P Cct Brkr / D Curve / 10A

Circuit Breakers



Panel Components



H.H. Barnum Company
800.695.3055

Picture Part Number/Description Notes



1240940000
Weidmuller IE-SW-VL08MT-8TX
managed fast Ethernet network switch, 8
port RJ45, IP 30



1241100000
Weidmuller Ethernet Switch - IE-SW
-PL16M-16TX, full managed.



IES-150B
Weidmuller, DIN Ethernet, unmanaged
switch, MINI 5XRJ45



IES-180B
Weidmuller, DIN Ethernet, unmanaged
switch, MINI 8XRJ45



942132001
Hirschmann Unmanaged, Industrial
ETHERNET Rail Switch, fanless design,
store and forward switching mode,
10/100 Mbit/s Ethernet , 5x 10/100BASE
-TX, TP cable, RJ45 sockets...



942132002
Hirschmann Unmanaged, Industrial
ETHERNET Rail Switch, fanless design,
store and forward switching mode,
10/100 Mbit/s Ethernet , 8x 10/100BASE
-TX, TP cable, RJ45 sockets...

Ethernet Switches



Panel Components



H.H. Barnum Company
800.695.3055

Picture	Part Number/Description	Notes
---------	-------------------------	-------



942141028

Spider-PL-20-08T1M29999TZ9HHHH 8 x 10/100Base-TX, 1 x 100Base-FX, MM SC Connector



943434021

Hirschmann, 8 port Fast-Ethernet -Switch, managed, software Layer 2 Enhanced, for DIN rail store-and-forward-switching, fanless design, Operating Temp 0...60°C.



943434023

Hirschmann 16 Port 10/100 RJ45 DIN Rail Advanced Managed Switch preconfigured for EtherNet/IP with redundant power and fault relay, includes VLAN supports, CLI...

Ethernet Switches



Panel Components



H.H. Barnum Company
800.695.3055

Picture

Part Number/Description

Notes



942103999-1

Hirschmann + EagleOne Industrial security router, 2 RJ45 10/100 ports, 12 -48VDC power, latest firmware release, NAT Forwarding

Router



Panel Components



H.H. Barnum Company
800.695.3055

Picture Part Number/Description Notes



722800
Lutze, 3-PHASE 480W, 24V, 20A,
SCREW CLAMP, COMPACT



722802
Lutze, 3-PHASE 480W, 24V, 30A,
SCREW CLAMP, COMPACT



722811
Lutze, Power Supply, 3-Phase, 340
-550V AC input, 24V DC output, 40 Amp,
960W, screw terminal, UL 508, UL
60950- CE



1469470000
Weidmuller Single Phase Power Supply,
Switch Mode Power Supply Unit PRO
ECO 72W 24V 3A



1469480000
Weidmuller Single Phase Power Supply,
Switch Mode Power Supply Unit PRO
ECO 120W 24V 5A



1469490000
Weidmuller Single Phase Power Supply,
Switch Mode Power Supply Unit PRO
ECO 240W 24V 10A

Pro-Eco Supplies



Panel Components



H.H. Barnum Company
800.695.3055

Picture Part Number/Description Notes



1469510000
Weidmuller Single Phase Power Supply,
Switch Mode Power Supply Unit PRO
ECO 480W 24V 20A



1469520000
Weidmuller Single Phase Power Supply,
Switch Mode Power Supply Unit PRO
ECO 960W 24V 40A



1469530000
Weidmuller 3 Phase, Power Supply,
Switch Mode Power Supply Unit PRO
ECO 120W 24V 5A



1469540000
Weidmuller 3 Phase, Power Supply,
Switch Mode Power Supply Unit PRO
ECO 240W 24V 10A



1469550000
Weidmuller 3 Phase, Power Supply,
Switch Mode Power Supply Unit PRO
ECO 480W 24V 20A



1469560000
Weidmuller, 3 Phase, Power Supply,
Switch Mode Power Supply Unit PRO
ECO 960W 24V 40A

Pro-Eco Supplies



Panel Components



H.H. Barnum Company

800.695.3055

Picture	Part Number/Description	Notes
---------	-------------------------	-------

WLB32C285PBQ



Banner, Work Light Bar; Switched Hi/Low/Off; Length: 285mm, 600 lumens, Voltage: 12-30Vdc; Environmental Rating: IP40 Color: White; Cascadable 4-pin Euro integral Connector;

WLB32ZC285PBQMB



Banner, WLB32 Work Light Bar; Switched Hi/Low/Off; Length: 285 mm, 600 lumens, Voltage: 85-264 V ac; Environmental Rating: IP50 Color: White; Cascadable QD - Includes Type B Power cord; Diffuse window

WLB32ZC570PBQMB



Banner WLB32 Work Light Bar; Switched Hi/Low/Off; Length: 570 mm, 1200 lumens, Voltage: 85-264 VAC; Environmental Rating: IP50, Color: White; Cascadable, QD - Includes Type B Power cord; Diffuse window

WLB32ZC850PBQMB



Banner WLB32 Work Light Bar; Switched Hi/Low/Off; Length: 850 mm, 1800 lumens, Voltage: 85-264 V ac; Environmental Rating: IP50, Color: White; Cascadable Quick Disconnect - Includes Type B Power cord; Diffuse window

WLB32ZC1130PBQMB



Banner, WLB32 Work Light Bar; Switched Hi/Low/Off; Length: 1130 mm, 2400 lumens, Voltage: 85-264 V ac; Environmental Rating: IP50 Color: White; Cascadable QD - Includes Type B Power cord; Diffuse window

WLB92ZC550PBQMB



BANNER - 3130 LUMENSWLB92 Work Light Bar; Switched On/Off; Dimming Potentiometer ;Length: 550 mm; Voltage: 100-277 V AC; IP50 ;Color: White; Cascadable; QD

DC Models Available

DC Models Available

Lighting



Panel Components



H.H. Barnum Company
800.695.3055

Picture

Part Number/Description

Notes



WLB92ZC1100PBQMB

BANNER- 6500 LUMENS WLB92 Work
Light Bar; Switched On/Off; Dimming
Potentiometer Length: 1100 mm;
Voltage: 100-277 V ac; Environmental
Rating: IP50 ;Color: White; Cascadable
;QD

Lighting



Panel Components



H.H. Barnum Company

800.695.3055

Picture	Part Number/Description	Notes
---------	-------------------------	-------



TL50GYRAQ

Banner EZ-Light TL50 Tower Light - 18
-30 VDC or 24 VAC, 3 Color (Green,
Yellow, Red), Audible Alarm, 5-Pin Micro
DC QD.



TL50GYRQ

Banner EZ-Light TL50 Tower Light - 18
-30 VDC or 24 VAC, 3 Color (Green,
Yellow, Red), 4-Pin Micro DC QD



TL70GYRQ

Banner, TL70 Tower Light; Black
Housing: 3-Color Indicator Voltage: 12
-30 V dc; Environ. Rating: IP65 Input:
Bimodal; Colors: Green Yellow Red Euro
5-pin Quick-Disconnect



K50LGRXPQ

Banner, EZ-Light, 50mm dome, 18
-30VDC, PNP, 2 color LED (green, red),
4-pin Micro QD



K90LGYRPQ

Banner K90L - 3 Color, Green, Yellow,
Red. PNP, 5-pin M12/Euro-style Quick
Disconnect



S22LGRYPQ

Banner, EZ Light S22L Color General
-Purpose indicators DC-Operated LED
Indicators with Green, Red, Yellow, 4-pin
Euro QD

Indicators



Panel Components



H.H. Barnum Company
800.695.3055

Picture

Part Number/Description

Notes



S18LGRYPQ

Banner, EZ Light S18L Color General
-Purpose indicators DC-Operated LED
Indicators with Green, Red, Yellow, 4-pin
Euro Quick Disconnect

Indicators



Panel Components



H.H. Barnum Company
800.695.3055

Picture	Part Number/Description	Notes
---------	-------------------------	-------



MT8070IE

Weintek 7" wide screen HMI, TFT color LCD screen, LED Backlight, 800x480 resolution, 4 wire resistive touch, Cortex 600Mhz processor, USB, RS232/RS485, 10/100 Ethernet, IP65 front panel.



MT8100IE

Weintek 10" wide screen HMI, TFT color LCD screen, LED Backlight, 800x480 resolution, 4 wire resistive touch, Cortex 600Mhz processor, USB, RS232/RS485, 10/100 Ethernet, IP65 front panel.



MTV-100

Weintek, Machine TV Interface. Din-Rail Mountable with HD 720p HDMI output. RJ45 and 9 pin Dshell communication plus one USB Host Port. SD Card Slot.

HMI'S



Panel Components



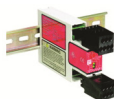
H.H. Barnum Company
800.695.3055

Picture Part Number/Description Notes



SC26-2D
Banner, SC26-2D Safety Controller: Non Expandable; 26 Input; 2 Outputs (.5 A each); Display; No Ethernet USB; 8 convertible Inputs; Removable Screw Terminals 24 V dc; 120 mA

Other Models Available



IM-T-9A
Banner, Interface Module, 2 NC inputs, 3 NO relay outputs, 24VDC, 6 A, 20ms response time



SRB301ST
Schmersal Protect Series Dual Channel Safety Monitoring Relay, 24V DC

Safety



SH04.22-NSW
AEG Mini Relay, 24V DC, 16A, positive guided contacts, 2 N.O + 2 N.C

AC Models Available



SH04.40-NSW
AEG mini relay, 24vdc, 16A, positive guided contacts, 4 N.O. contacts

AC Models Available



SH04.31-NSW
AEG mini relay, 24vdc, 16A, positive guided contacts, 3 N.O./ 1 N.C.

AC Models Available

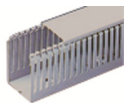


Panel Components



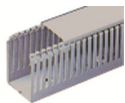
H.H. Barnum Company
800.695.3055

Picture	Part Number/Description	Notes
---------	-------------------------	-------



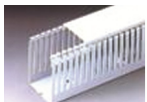
T1-1530G

Iboco, Wire Duct, 1.5" wide x 3" Tall (40mmx80mm), Grey PVC Slot, 6' Length (2 METERS), Includes Cover



T1-2230G

Iboco, Wire Duct, 2.25" wide x 3" Tall (60mmx80mm), Grey PVC Slot, 6' Length (2 METERS), Includes Cover



T1-1530W

Iboco, Wire Duct, 1.5" wide x 3" Tall (40mmx80mm), White PVC Slot, 6' Length (2 METERS), Includes Cover



T1-2230W

Iboco, Wire Duct, 2.25" wide x 3" Tall (60mmx80mm), White PVC Slot, 6' Length (2 METERS), Includes Cover



ICT-18L-M

Iboco, Cable Ties, 1.63" Max Loop Diameter, 6.15" Long, Natural Nylon, 18 pound Loop Tensile strength, One Package contains - 1,000 Pcs.



ICT-18LB-M

Iboco, Cable Ties, 1.63" Max Loop Diameter, 6.15" Long, Black Nylon, 18 pound Loop Tensile strength, One Package contains - 1,000 Pcs.



Panel Components



H.H. Barnum Company
800.695.3055

Picture	Part Number/Description	Notes
---------	-------------------------	-------



W-60-1SP-BK

Rip-Tie Wrap Strap, Black in Color, 1/2"
Wide x 200 Yards Long



W-60-MSP-BK

Rip-Tie Wrap Strap, Black in Color, 3/4"
Wide x 200 Yards Long



83204260

Murrplastik Split-Flex PP, two section slit
cable corrugated conduit, Type EWT-PA
M32/P29, 1.05" ID, 1.36" OD, bend
radius 5.51", Black, 25 meter length

Accessories

Controls for Factory Automation



..

H.H. Barnum Company 800.695.3055